



committed to quality & service

SANI

CONCRETE SPACERS



WIDE RANGE OF SPACERS

Why factory-made Concrete Spacers?

Rock Solid Strength

All types of spacers are made under strict quality control guidelines. Compressive strength not less than 60 N/mm². We also provide the spacers with high strength (up to 90 N/mm²), if order is placed at least 1 month in advance.

Precision

Casted in precise mold, ensures accurate dimensions under supervision of highly skilled team.

Easy Identification

Dimension details of spacers are embossed on every piece. Packed in bag with exact count and for ease of handling/movement at site. These features and factors are missing in site made concrete spacers.

Compatibility

Concrete to concrete bond is perfect. No hair cracks develop between the spacer and surrounding concrete.



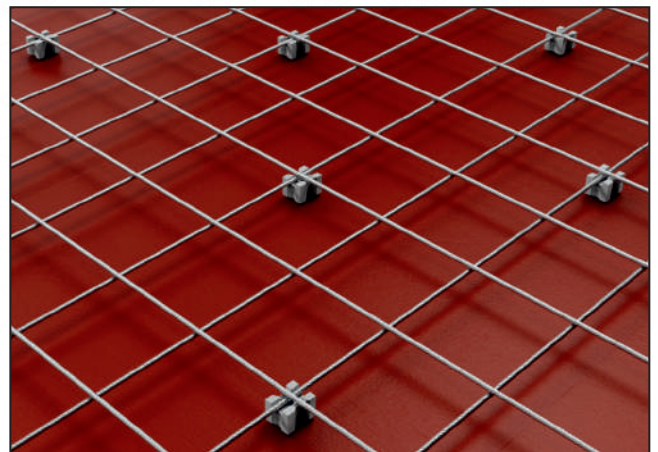
Why not Plastic Spacers?

Plastic and concrete does not go along, as they do not bond properly. Studies show that corrosion can initiate in such cases even though the spacers are used. No fire or heat resistance, other way it flammable.

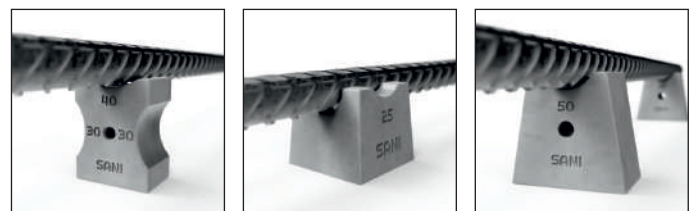
Why not Site Made Spacers?

Concrete spacers shall not be made on the construction site because:-

- No control on proportion of the ingredients of the mixture
- No proper vibration for dense concrete
- No control on strength to match design grade strength
- Wastage of Cement



Sani Concrete Spacers are designed with accurately proportionated mixture to meet the targeted strength. Moreover the molds used for casting are precise in dimensions and shape to meet the structural requirements.



HEAVY SPACERS



Size : 50mm Footing Heavy
Product Code : SS50H
Quantity in Bag : 75
Cover Size : 50mm
Max Bar Dia. mm : 40



Size : 75mm Footing Heavy
Product Code : SS75H
Quantity in Bag : 50
Cover Size : 75mm
Max Bar Dia. mm : 40



committed to quality & service

SANI

CONCRETE SPACERS

SPACIAL SPACERS



Size : 30x60 Electrical Conduit
Product Code : CCPS3060
Quantity in Bag : 300
Cover Size : 15mm
Max Pipe Dia. mm : 30



Size : 40mm L Corner
Product Code : SS40C
Quantity in Bag : 150
Cover Size : 40mm
Max Bar Dia. mm : 40

SINGLE SPACERS



Size : 20mm Square
Product Code : SS20
Quantity in Bag : 700
Cover Size : 20mm
Max Bar Dia. mm : 12



Size : 25mm Square
Product Code : SS25
Quantity in Bag : 700
Cover Size : 25mm
Max Bar Dia. mm : 12



Size : 30mm Square
Product Code : SS30
Quantity in Bag : 500
Cover Size : 30mm
Max Bar Dia. mm : 12



Size : 50mm Footing Eco.
Product Code : SS50L
Quantity in Bag : 250
Cover Size : 50mm
Max Bar Dia. mm : 16



Size : 75mm Footing Eco.
Product Code : SS75L
Quantity in Bag : 100
Cover Size : 75mm
Max Bar Dia. mm : 20



Size : 50mm Footing Regu.
Product Code : SS50M
Quantity in Bag : 150
Cover Size : 50 mm
Max Bar Dia. mm : 32



Size : 75mm Footing Regu.
Product Code : SS75M
Quantity in Bag : 75
Cover Size : 75mm
Max Bar Dia. mm : 32

MULTI SPACERS



Size : 20*25mm
Product Code : SS2025L
Quantity in Bag : 700
Cover Size : 20 x 25
Max Bar Dia. mm : 12



Size : 20*25mm Medium
Product Code : SS2025M
Quantity in Bag : 300
Cover Size : 20 x 25
Max Bar Dia. mm : 12



Size : 30*35mm
Product Code : SS3035
Quantity in Bag : 300
Cover Size : 30 x 35
Max Bar Dia. mm : 20



Size : 30*40mm
Product Code : SS3040
Quantity in Bag : 300
Cover Size : 30 x 40
Max Bar Dia. mm : 20



Size : 20*25*30*40
Product Code : SS2040
Quantity in Bag : 300
Cover Size : 20 x 25 x 30 x 40
Max Bar Dia. mm : 16



Size : 20*25*40*50
Product Code : SS2050
Quantity in Bag : 200
Cover Size : 20 x 25 x 40 x 50
Max Bar Dia. mm : 20



Size : 35*40*45*50
Product Code : SS3550
Quantity in Bag : 200
Cover Size : 35X40X45X 50
Max Bar Dia. mm : 20 - 25

DISTANCE BAR/KANDA



Size : 200mm Long
Product Code : KN200
Quantity in Bag : 50
Cover Size : 200



Size : 230mm Long
Product Code : KN230
Quantity in Bag : 50
Cover Size : 230



Size : 250mm Long
Product Code : KN250
Quantity in Bag : 50
Cover Size : 250



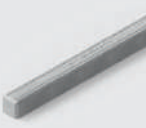
Size : 300mm Long
Product Code : KN300
Quantity in Bag : 25
Cover Size : 300



Size : 350mm Long
Product Code : KN350
Quantity in Bag : 25
Cover Size : 350



Size : 450mm Long
Product Code : KN450
Quantity in Bag : 12
Cover Size : 450



Size : 600mm Long
Product Code : KN600
Quantity in Bag : 6
Cover Size : 600

▶ ROUND SPACERS ◀



Size : 20mm Round
Product Code : SR20
Quantity in Bag : 300
Cover Size : 20
Max Bar Dia. mm : 10



Size : 25mm Round
Product Code : SR25
Quantity in Bag : 250
Cover Size : 25mm
Max Bar Dia. mm : 10



Size : 30mm Round
Product Code : SR30
Quantity in Bag : 200
Cover Size : 30
Max Bar Dia. mm : 12



Size : 35mm Round
Product Code : SR35
Quantity in Bag : 150
Cover Size : 35mm
Max Bar Dia. mm : 16



Size : 40mm Round
Product Code : SR40
Quantity in Bag : 100
Cover Size : 40mm
Max Bar Dia. mm : 12



Size : 50mm Round 18mm
Product Code : SR50
Quantity in Bag : 75
Cover Size : 50 mm
Max Bar Dia. mm : 12



Size : 50mm Round 22mm
Product Code : SR50H
Quantity in Bag : 75
Cover Size : 50 mm
Max Bar Dia. mm : 12



Size : 65mm Round
Product Code : SR65
Quantity in Bag : 40
Cover Size : 65 mm
Max Bar Dia. mm : 16



Size : 75mm Round 20mm
Product Code : SR75L
Quantity in Bag : 25
Cover Size : 75mm
Max Bar Dia. mm : 16



Size : 75mm Round 30mm
Product Code : SR75M
Quantity in Bag : 20
Cover Size : 75mm
Max Bar Dia. mm : 16



Size : 75mm Round 40mm
Product Code : SR75H
Quantity in Bag : 15
Cover Size : 75mm
Max Bar Dia. mm : 16

The following recommendations are based on our study at various construction sites. This guidelines can be used by site team, to order sufficient quantity of different types of spacers based on the need to provide proper cover.

Structural Member	Diameter of Rebar	Permissible Distance	No. Required
Slab	< 10mm	70cm	4 No. per Sqm #
	> 10mm	90cm	2 No. per Sqm #
Beam	10mm	50cm	4 No. per Meter #
	10mm to 16mm	100cm	1.5 No. per Meter *
	Above 16mm	125cm	0.8 No. per Meter *
Column	12mm	25cm	Generally 2 No. per Meter *. Number of units depends on size of column
	12mm to 20mm	50cm	
	Above 20mm	100cm	

*Multiply by application area of formwork

* Multiply by number of faces of formwork

The specifications, sizes and other details/factors provided in this catalogue are subject to change without notice. Kindly confirm the same before placing the order.



Why Concrete Spacers?

Why concrete spacers are must in R. C.C. Structures?

Spacers helps to maintain proper cover to the reinforcement bars. Proper cover is essential as;

1. It ensures adequate bond area so that stresses from concrete are transferred to steel. Cover requirement said in IS456:2000 clause 26.4
2. Provides protection from external environment to rebars against corrosion as per IS456:2000 Table 16
3. It increase fire resistance, when it provides as per design, as it delays softening of rebars due to high temperature in case of fire. IS456 Table 16A given below for more details

26.4 Nominal Cover to Reinforcement

26.4.1 Nominal Cover

Nominal cover is the design depth of concrete cover to all steel reinforcements, including links. It is the dimension used in design and indicated in drawings. It shall not be less than the diameter of the bar.

26.4.2 Nominal Cover to Meet Durability Requirement

Minimum values for the nominal cover of normal weight aggregate concrete which should be provided to all reinforcement, including links depending on the condition of exposure described in Table 16.

26.4.2.1 However for a longitudinal reinforcing bars in a column, nominal cover shall not be less than 40 mm in any case, or less than the diameter of

such bar. In the case of columns of minimum dimension of 200 mm or under, whose reinforcing bars do not exceed 12 mm, a nominal cover of 25 mm may be used.

26.4.2.2 For footings minimum cover shall be 50 mm.

Table 16 Nominal Cover to Meet Durability Requirement (Clause 26.4.2)

Exposure	Nominal Concrete Cover in mm not Less Than
Mild	20
Moderate	30
Severe	45
Very severe	50
Extreme	75

Note:

1. For main reinforcement up to 12 mm diameter bar for mild exposure the nominal cover may be reduced by 5 mm.
2. Unless specified otherwise, actual concrete cover should not deviate from the required nominal cover by +10mm.
3. For exposure condition 'severe' and 'very severe', reduction of 5 mm may be made, where concrete grade is M35 and above.

Table 16A

Nominal Cover to Meet Specified Period of Fire Resistance

Fire Resistance	Nominal Cover						
	Beams		Slabs		Ribs		Columns
	Simply Supported	Continuous	Simply Supported	Continuous	Simply Supported	Continuous	
h	mm	mm	mm	mm	mm	mm	mm
0.5	20	20	20	20	20	20	40
1	20	20	20	20	20	20	40
1.5	20	20	25	20	35	20	40
2	40	30	35	25	45	35	40
3	60	40	45	35	55	45	40
4	70	50	55	45	65	55	40

Note:

1. The nominal covers given relate specifically to the minimum member dimensions given in Table 16 A.
2. Cases that lie below the bold line require attention to the additional measures necessary to reduce the risks of spalling.



OUR VALUABLE CLIENTS



APPROVED BY



📍 E-301, Royal Orange County, Shivraj Nagar, Rahatani, Pune-411017

✉️ sanisalesnservices@gmail.com

☎️ 9011035541 | 9545535541 | 70303 35541

🌐 www.sanispacers.com

📍 Mumbai Region

✉️ sanispacersmumbai@gmail.com

☎️ 9764135541 | 9011035541